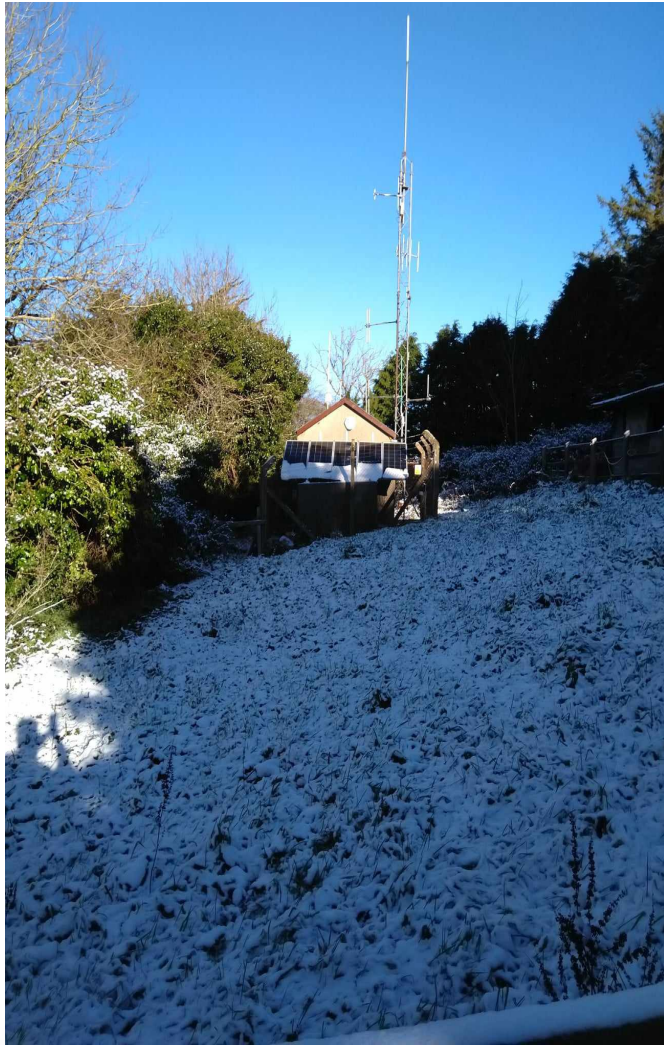


Great Hill, the home of TR & TQ



Great Hill, the Home of TR & TQ



Aerial Mast



Aerials

TR



TQ



• Solar Panels installed in 2022

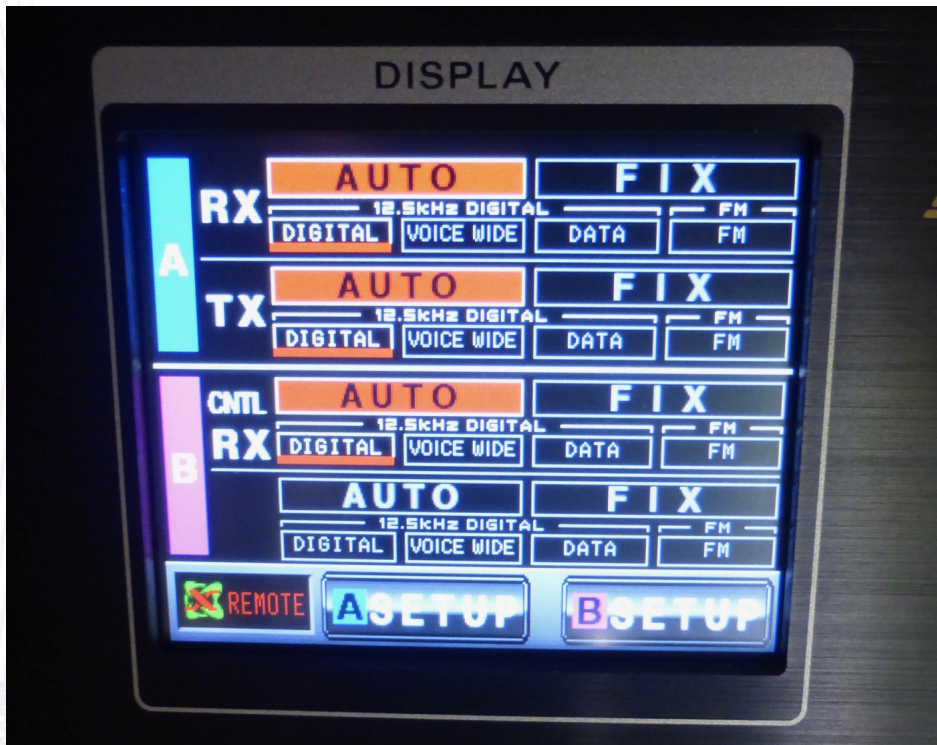


Previous Sites

From its beginnings in the late 1970's this repeater has been through quite a few changes. These changes were not only completed by the people involved in constructing the RF and Mechanical side of things, there is a very long list of those, but also the various sites, antenna and actual RF equipment itself.

When GB3TR first went on the air from the garage in the garden of a bungalow in Newton Abbot belonging to Steve G4EDG on the 29th March 1980 it was almost a wonder to behold, for those there at the time. None had ever worked on a repeater before and the whole thing had to be put together in an almost true "Amateur" way.

TQ Equipment



C4FM Screen grab of TQ

The screenshot displays the WIRES-X software interface. At the top, the window title is "WIRES-X" and the menu bar includes "File(F)", "View(V)", "Connect(C)", "Tool(T)", and "Help(H)". The main window shows a room view for "Room GB7TQ-ROOM(27092) member 4 nodes". Below this, there are buttons for "GB7TQ-RPT", "G7HIK", "HA5RV-ND", and "G1VTK-ND". A status bar indicates "Send Node : GB7TQ-RPT (17092) / Mobile : G7HIK".

The main display area is divided into two sections. The left section shows a list of users with columns for "+A.User ID", "DTMF...", "CallSign", "City", "State", "Cou...", and "Freq(MHz)". The right section shows a log of events with columns for "User", "Uplink", "Downlink", and "Room".

+A.User ID	DTMF...	CallSign	City	State	Cou...	Freq(MHz)
---9Y4R---	30199	9Y4R	Port-of-Spain	Trinidad	Trin...	147.850M..
---NWRARC1	18284	AE7JG	Phoenix	Arizona	USA	442.900M..
--JE1UDL--	16671	JE1UDL	Takasaki-city	Gunma	Japan	
-IWAKUNI-	15403	JH4VIZ	Iwakuni-city	Yamagu...	Japan	144.560M..
-KYOTO-	19414	JL3ZGV	Kyoto-city	Kyoto	Japan	430.820M..
-TOYAMA2-	12344	JH9YXY	Toyama-city	Toyama	Japan	144.560M..
-TOYAMA3-	12751	JF9NHG	Toyama-city	Toyama	Japan	430.900M..
1ST-RIG-ND	12556	JH8IKV	Sapporo-city	Hokkaido	Japan	430.940M..
2531-KDRL	14935	JL3ZMX	Higashiosaka-c...	Osaka	Japan	144.560M..
27-JO3BAL	13285	JO3BAL	Kobe-city	Hyogo	Japan	
29158ROOM	14886	JG1ZUH	Itabashi-ku	Tokyo	Japan	430.840M..

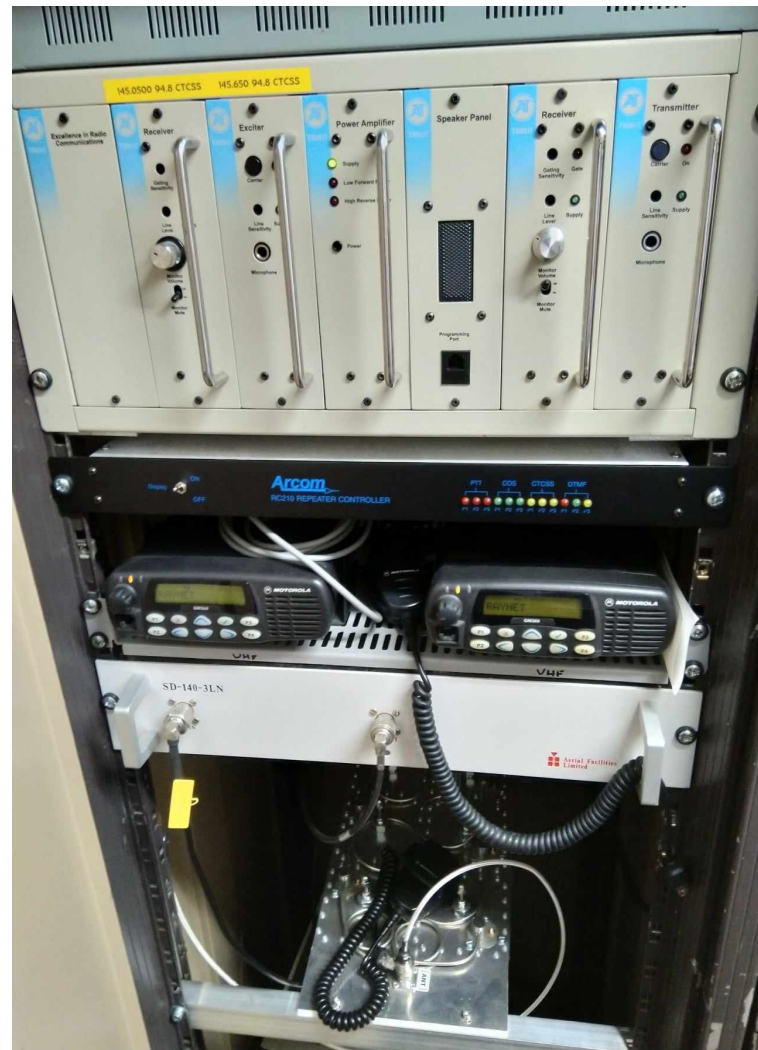
+Room ID	DTMF...	Act	Room name	City	Sta
-----0A	27472	000	Bedfordshire Gateway	Dunton	Bei
-----SFG	41405	005	Staffs Fusion Group	Hednesford	Sta
-----WFG	89327	000	Worcs Fusion Group	Worcester	He
-----NERV	22945	000	NERV-"-Zi-B"	Nagoya-city	Aic
-----SFTR	80209	001	Santa Fe Trail Ranch	trinidad	Co
-----CQ-VK	24026	000	CQ Australia	Melbourne	Vic
-----GB3WF	27292	001	-----GB3WF	Leeds	We
-----MB6HG	89062	000	MB6HG Chat	Ormskirk	Lar

The log on the right shows the following events:

- 2023/10/01 19:55:39 Station info TX to V-CH.
- 2023/10/01 19:58:43 Station info TX to V-CH.
- 2023/10/01 19:58:48 *-*- Call Start No.27092 *-*-
- 2023/10/01 19:58:48 Connected to GB7TQ-ROOM(27092).
- 2023/10/01 19:58:48 Room Member 1 Node.
- 2023/10/01 19:59:17 G1VTK-ND(78316) IN. 3 Nodes.

At the bottom of the window, there are buttons for "SEND" and "CLR", and a status bar showing "Ver-1.540" and "ONLINE". The Windows taskbar at the bottom shows the time as 20:13 on 01/10/2023, with a temperature of 18°C and various system icons.

TR Equipment



A typical cavity filter



Repeater Keeper Bill G8XST



Backup Team TR

Colin G4FCN John G4VUD Dave G0DDF



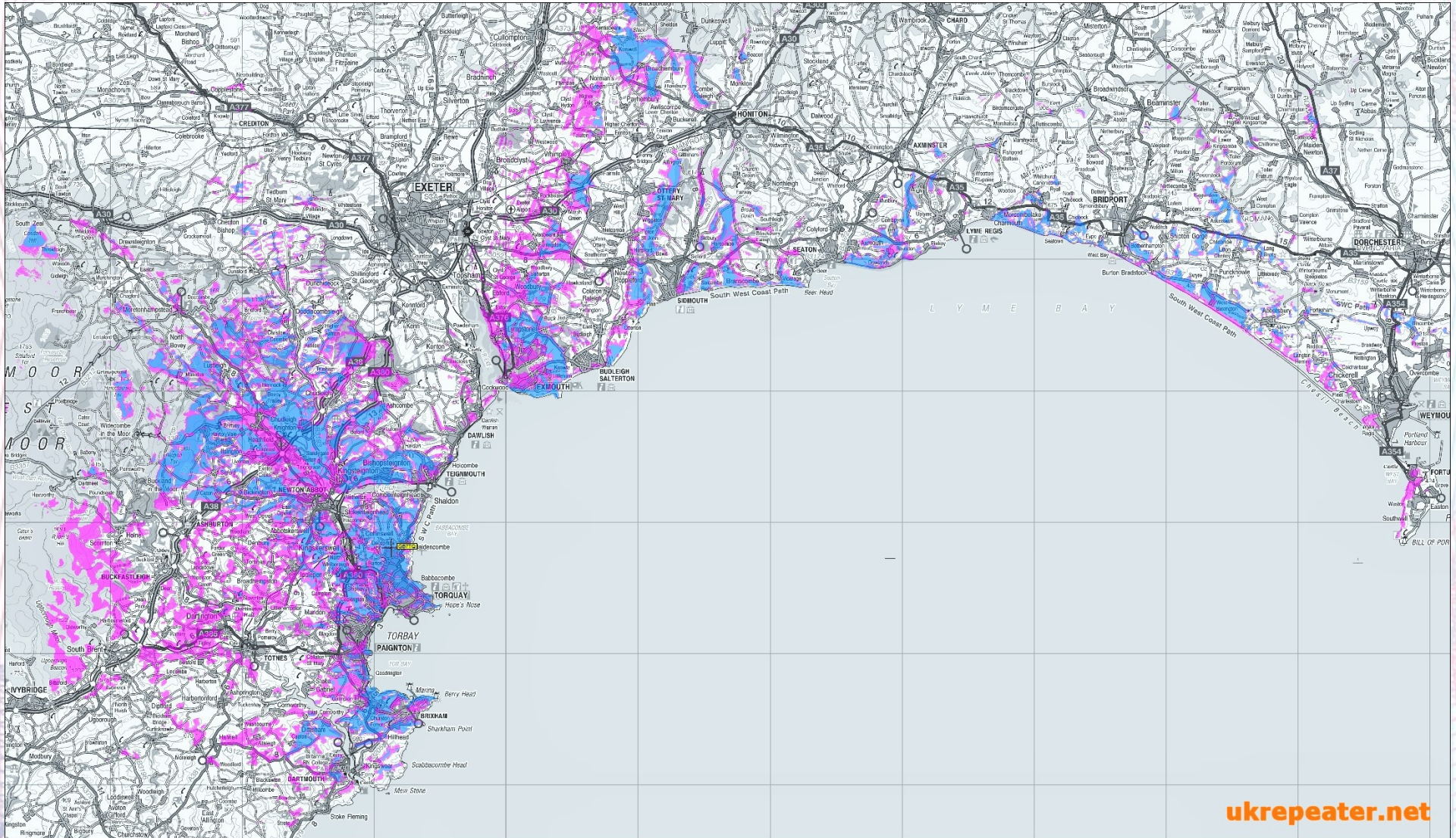
Backup Team TQ

Ian G6TEQ

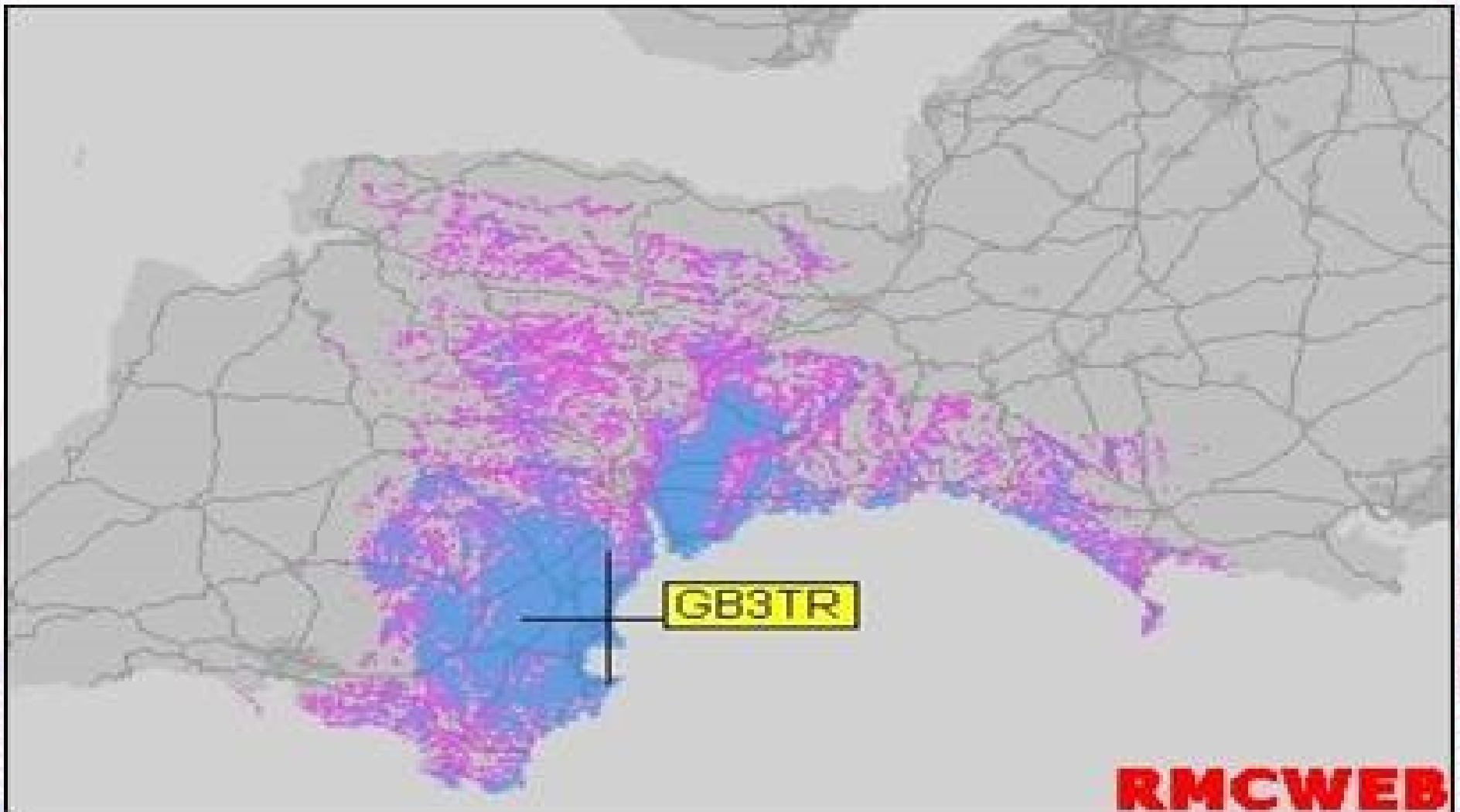
Ian M0IDP



GB7TQ Repeater Coverage



GB3TR Repeater Coverage



Costs

- The annual cost of running a repeater can average £5000, per year and is increasing year on year.
- Commercial sites are all in excess of £25k.
- Building Maintenance,
- Power,
- Business Rates Liability,
- Equipment Maintenance,
- Antenna Rigging,
- Insurance,
- *Are all examples of the many costs involved.*

Fundraising Activity

Both TR and TQ benefit from the huge amount of support from it's donors who underwright most of the costs.

There are collections made at some Rallies to contribute to Energy and Broadband use.

An unwritten rule:- is that Amateurs who support their local repeater are entitled to use repeaters across the country.

- Collections From Rallies 2023 £ 160.00
- How can people help?

Setup Info for Your Radio

(Available as an app on your Iphone or Android, called Repeater Book)

< IO80FL GB3TR

Band: 2m

Receive: 145.65000

Transmit: 145.05000

Offset: -0.6 MHz

Tone: 94.8 **DCS:**

Services: FM IRLP

Heading: North East

Distance: 0.2 Miles

Location: Torquay

County:

State: **Prov:**

Country: GB

< IO80FL GB7TQ

Band: 70cm

Receive: 430.88750

Transmit: 438.48750

Offset: +7.6 MHz

Tone: 94.8 **DCS:**

Services: FM YSF

Heading: North East

Distance: 0.2 Miles

Location: Torquay

County:

State: **Prov:**

Country: GB

Wires-X enabled GB7TQ-RPT

Demonstration and Operating Guidelines

- Perhaps a discussion at this point around operating guidelines bearing in mind the difference between.
- Primary Mobile use?
- Home use?
- National Mobile Phone laws?
- Good etiquette of course will require TQ to be returned to it's normal operating mode, at end of your contact, after being in a C4FM Chat Room.
- TR requires '73' to be sent after using IRLP.
- Enjoy using the Repeaters and make good use of them.

Contributors

A huge
'Thank You'

To our donors and support
teams for continued support
over many years.

The background features a complex, abstract pattern of overlapping grid lines. The lines are primarily red and blue, creating a sense of depth and movement. The pattern is most dense in the corners and fades towards the center, where the text is located. The overall effect is a modern, digital aesthetic.

Question Time